



CLIP UNIVERSEL

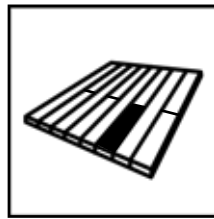
HYBRID
8-25


COBRA GLOBAL
DECKING
SYSTEM
FASTENER®

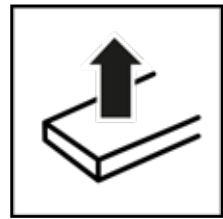


CLIP HYBRID 8-25

The benefits



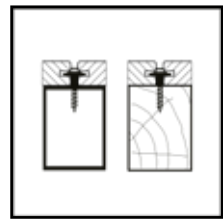
Can be dismantled locally



High tensile strength



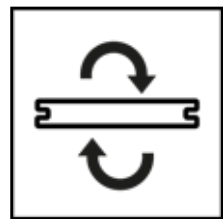
Absorbs decking movements



Fixing on wood and aluminium joists



Quick and easy to fit



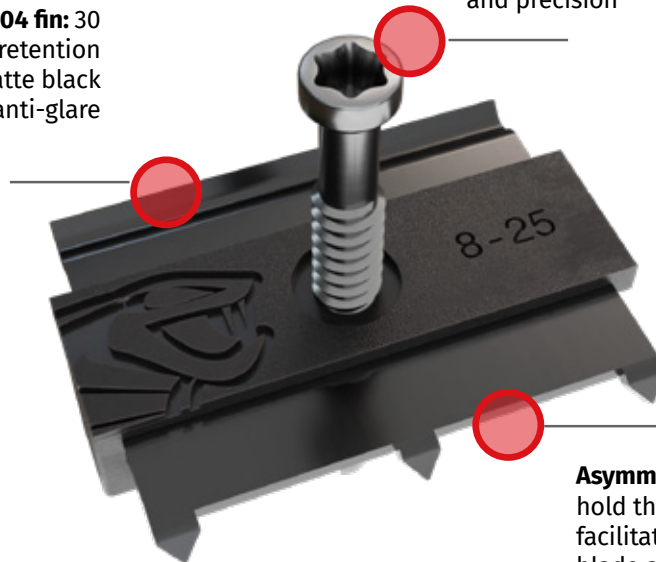
Compatible with reversible blades
(20 to 26 mm x 150 mm max.)

HYBRID 8-25, A BI-MATERIAL CLIP

Exclusive & Innovative

Stainless steel AISI 304 fin: 30 mm wide for optimal retention and 1.8 mm thick, matte black lacquered for anti-glare

Factory-fitted **stainless steel screws** on the clip for quick and easy installation. Torx grip for comfort and precision



CERTIFIED
22 160 820.1



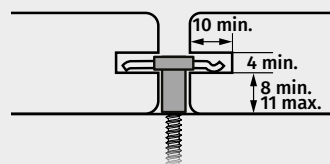
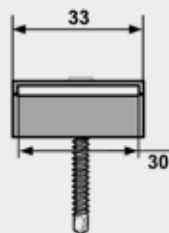
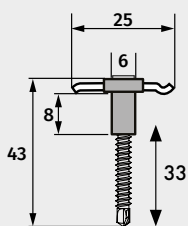
Asymmetrical clip: a clawed side to hold the blade firmly, a curved side to facilitate the positioning of the next blade and allow the wood to expand.

Black UV-resistant polypropylene body, 6mm wide, ensuring a suitable and regular spacing between the blades.



Honeycomb structure absorbs the swelling of the wood

Self-drilling point for fixing in wood or aluminium



ALUMINIUM



Min thickness
2mm

WOOD



Density max.
900 kg/m³

COBRA® HYBRID 8-25

Ideal for installation
exotic wood decking

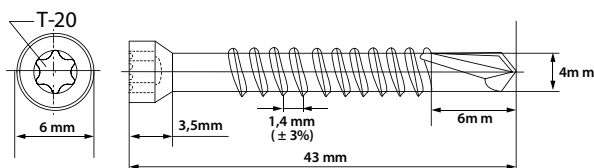


Inox AISI410

CLIP HYBRID 8-25 L

Screw characteristics

- 4.8 x 43 mm AISI410 stainless steel screws
- Borrow Torx TX20
- Self-drilling tip
- Drilling capacity in aluminium: 4 mm
- Drilling in hardwood with a density of up to 900 kg/m³
- Reduced 6 mm diameter head
- Black lacquer





AIRSPACER

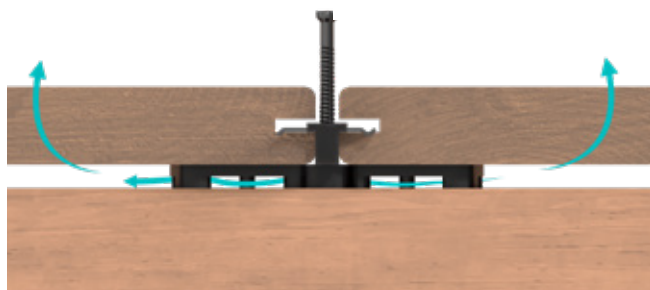
Installation & benefits



Cobra Airspacer **promotes ventilation** between the board and the joist without affecting the action of the fixing clip or the movement of the wood.

Its customised design fits perfectly under the honeycomb base of the Cobra Hybrid clips for **quick and easy installation**.

The Airspacer shim helps to **limit the shearing effect on the fixing screw**.



Code FR	Code NL	Code EAN	Qty/package	Weight (kg)
1040	2619	3700421810406	8	0,75

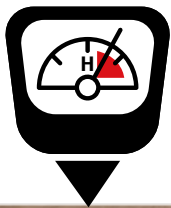


COBRA® HYBRID 8-25
Installation tips

SPACING REQUIREMENTS

Swelling / Maximum shrinkage

HUMIDITY
16% < H < 20%



6mm



KD WOOD (KILN DRIED)

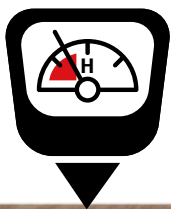


4mm



MAX SWELLING

HUMIDTY
H < 16%



8mm



VERY DRY WOOD



13mm



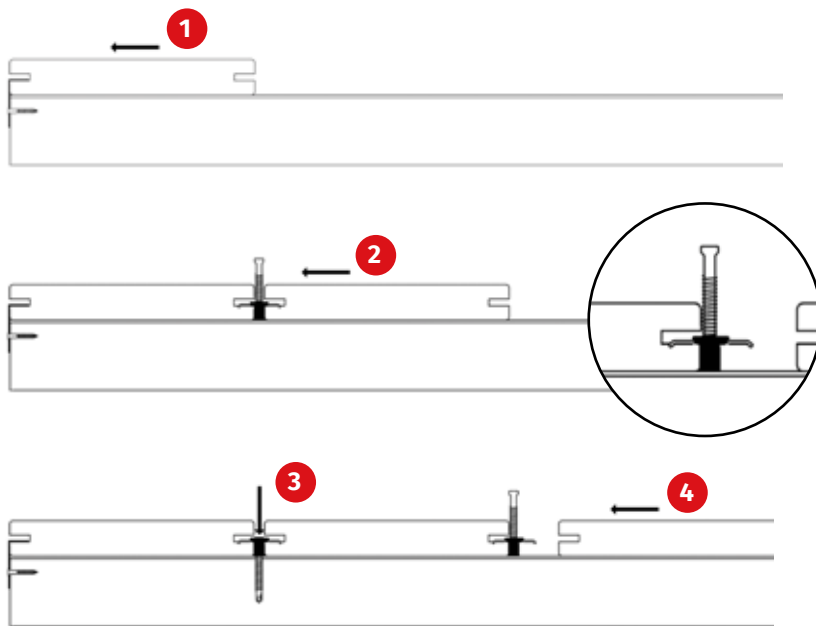
MAX.

MAXIMUM AUTHORISED SPACING :
13mm

Recommendations: Kiln-dried exotic timber, applied at a moisture content of around 18%.
Ipé, Padouck, Mukulungu (Afrikulu), Afrormosia, Louro Gamella (Tiara), Bamboo, Teak, Jatoba, Merbau, Garapa, Douglas fir, thermo-modified wood, Kebony, Accoya.

CLIP HYBRID 8-25

Installation



1. Fitting the Start/End clip, then laying the first board

2. Fit the Hybrid clip, claw side down, into the groove, then fit the next board, curved side down, up to the clip wedge.

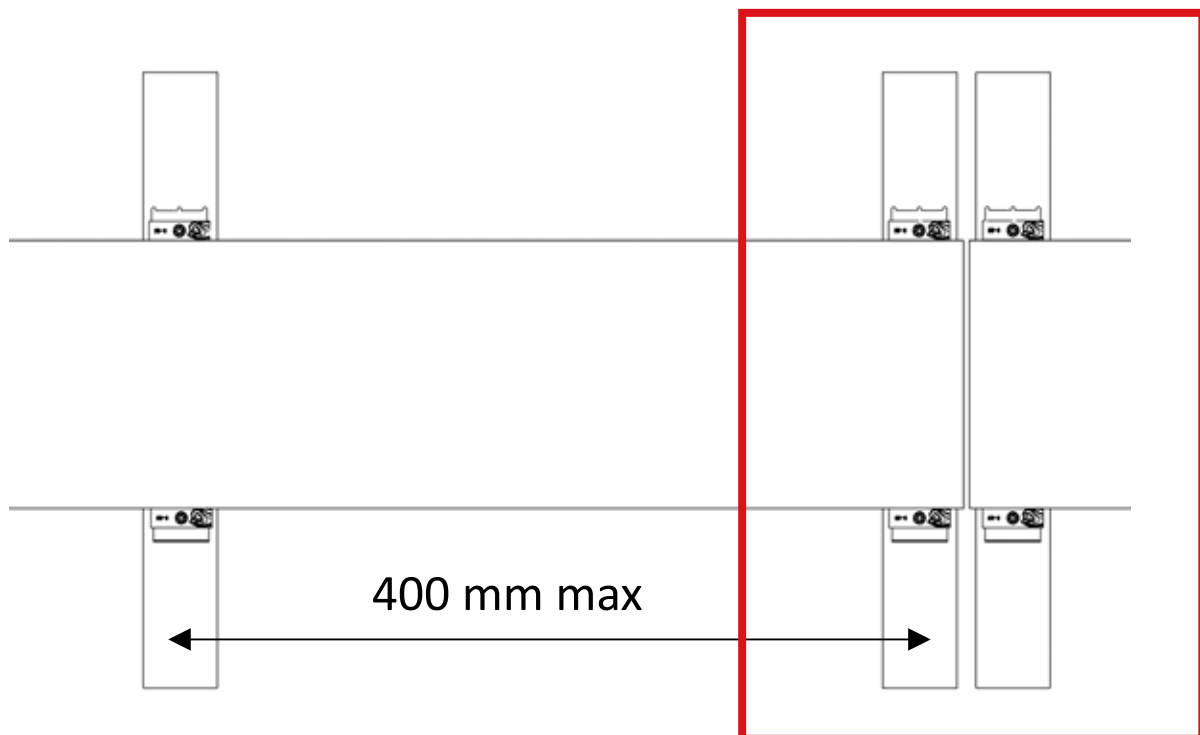
3. Screw on the clip, holding the blade in place. Tap the blade with a mallet to ensure it is correctly inserted.

4. Repeat the operation until you reach the last blade and finish with the final start/end clip.



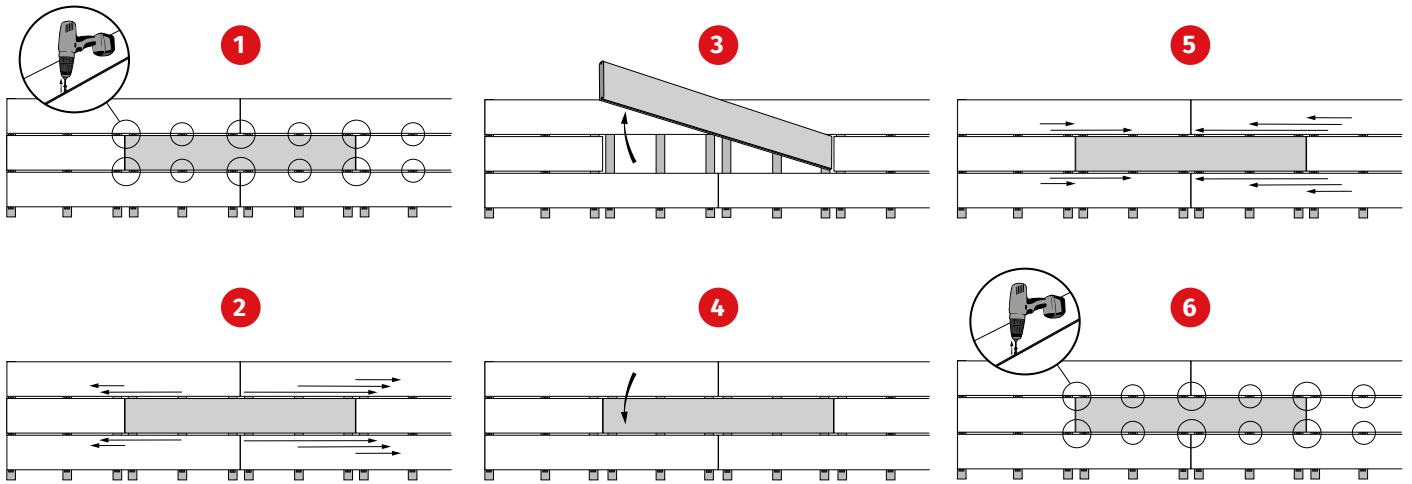
The use of clamps is recommended for optimal and rapid screwing of Hybrid clips.

Installation rules



Double joisting at the ends of the boards

Replacing a blade



1. Unscrew the clips

2. Spread the clips at the ends

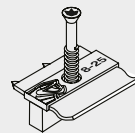
3. Remove the old blade

4. Position the new blade

5. Replace the clips

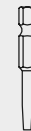
6. Screw on the new blade

Conditionnement



90 pcs

T 20



1 pc

± 3,2 m^{2*}

90mm

± 4,5 m^{2*}

120mm

± 5 m^{2*}

145mm

*Evaluation avec un entraxe entre lambourde de 40mm.

Code FR	Code NL	Code EAN	Qty/ package	Qty/pallet	Weight (kg)
0964	2662	3700421809646	8	512	1,05